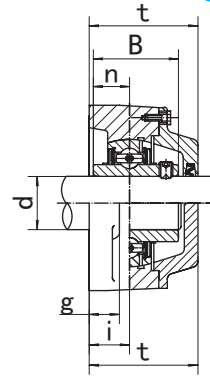
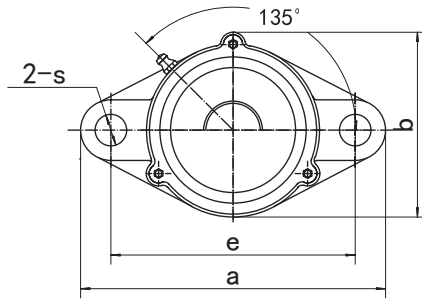


Flange Units (Oval)

UCCFL2 (Normal-duty)



Unit NO.	Dimensions (mm / in.)										Bolt Size mm/in.	Bearing No.	Housing No.	Weight (kg)
	d	a	e	i	g	s	b	t	B	n				
UCCFL204 204-12	20 3/4	113 4-7/16	90 3-35/64	15 19/32	11 7/16	12 15/32	66 2-19/32	46 1-13/16	31 1.2205	12.7 0.500	M10 3/8	UC204 UC204-12	CFL204	0.60 0.60
UCCFL205 205-13 205-14 205-15 205-16	25 13/16 7/8 15/16 1	130 5-1/8	99 3-57/64	16 5/8	13 1/2	16 5/8	73 2-7/8	51 2-1/64	34.1 1.3425	14.3 0.563	M14 1/2	UC205 UC205-13 UC205-14 UC205-15 UC205-16	CFL205	0.92 0.96 0.95 0.93 0.92
UCCFL206 206-17 206-18 206-19 206-20	30 1-1/16 1-1/8 1-3/16 1-1/4	148 5-13/16	117 4-39/64	18 45/64	13 1/2	16 5/8	84 3-15/16	55 1-11/64	38.1 1.5000	15.9 0.626	M14 1/2	UC206 UC206-17 UC206-18 UC206-19 UC206-20	CFL206	1.23 1.24 1.25 1.23 1.22
UCCFL207 207-20 207-21 207-22 207-23	35 1-1/4 1-5/16 1-3/8 1-7/16	161 6-11/32	130 5-1/8	19 3/4	14 35/64	16 5/8	94 3-45/64	59 1-21/64	42.9 1.6890	17.5 0.689	M14 1/2	UC207 UC207-20 UC207-21 UC207-22 UC207-23	CFL207	1.67 1.73 1.70 1.67 1.64
UCCFL208 208-24 208-25	40 1-1/2 1-9/16	175 6-7/8	144 5-43/64	21 53/64	14 35/64	16 5/8	104 3-3/32	66 2-19/32	49.2 1.9370	19 0.748	M14 1/2	UC208 UC208-24 UC208-25	CFL208	2.20 2.24 2.21
UCCFL209 209-26 209-27 209-28	45 1-5/8 1-11/16 1-3/4	188 7-13/32	148 5-53/64	22 55/64	15 19/32	19 3/4	113 4-29/64	67 2-41/64	49.2 1.9370	19 0.748	M16 5/8	UC209 UC209-26 UC209-27 UC209-28	CFL209	2.60 2.70 2.66 2.62
UCCFL210 210-29 210-30 210-31 210-32	50 1-13/16 1-7/8 1-15/16 2	197 7-3/4	157 6-3/16	22 55/64	15 19/32	19 3/4	120 4-23/32	71 2-51/64	51.6 2.0315	19 0.748	M16 5/8	UC210 UC210-29 UC210-30 UC210-31 UC210-32	CFL210	2.96 3.08 3.03 2.98 2.84
UCCFL211 211-32 211-33 211-34 211-35	55 2 2-1/16 2-1/8 2-3/16	224 8-13/16	184 7-1/4	25 63/64	18 23/32	19 3/4	134 5-9/32	75 2-61/64	55.6 2.1890	22.2 0.874	M16 5/8	UC211 UC211-32 UC211-33 UC211-34 UC211-35	CFL211	4.27 4.42 4.36 4.31 4.25
UCCFL212 212-36 212-37 212-38 212-39	60 2-1/4 2-5/16 2-3/8 2-7/16	250 9-27/32	202 7-61/64	29 1-9/64	18 23/32	23 29/32	144 5-43/64	86 3-25/64	65.1 2.5630	25.4 1.000	M20 3/4	UC212 UC212-36 UC212-37 UC212-38 UC212-39	CFL212	5.27 5.40 5.32 5.25 5.18
UCCFL213 213-40 213-41	65 2-1/2 2-9/16	258 10-5/32	210 8-17/64	30 1-3/16	22 7/8	23 29/32	157 6-3/16	89 3-35/64	65.1 2.5630	25.4 1.000	M20 3/4	UC213 UC213-40 UC213-41	CFL213	6.68 6.77 6.68
UCCFL214 214-42 214-43 214-44	70 2-5/8 2-11/16 2-3/4	265 10-7/16	216 8-1/2	31 1-7/32	22 7/8	23 29/32	163 6-27/64	98 3-55/64	74.6 2.9370	30.2 1.189	M20 3/4	UC214 UC214-42 UC214-43 UC214-44	CFL214	7.50 7.71 7.61 7.51
UCCFL215 215-45 215-46 215-47 215-48	75 2-13/16 2-7/8 2-15/16 3	275 10-13/16	225 8-55/64	34 1-11/32	22 7/8	23 29/32	168 6-39/64	102 4-1/64	77.8 3.630	33.3 1.311	M20 3/4	UC215 UC215-45 UC215-46 UC215-47 UC215-48	CFL215	8.01 8.26 8.15 8.04 7.92
UCCFL216 216-49 216-50 216-51	80 3-1/16 3-1/8 3-3/16	290 11-13/32	233 9-11/64	34 1-11/32	22 7/8	25 63/64	188 7-13/32	107 4-7/32	82.6 3.2520	33.3 1.311	M22 7/8	UC216 UC216-49 UC216-50 UC216-51	CFL216	10.40 10.58 10.45 10.32
UCCFL217 217-52 217-53 217-55	85 3-1/4 3-5/16 3-7/16	305 12	248 9-49/64	36 1-27/64	24 15/16	25 63/64	198 7-51/64	111 4-3/8	85.7 3.3740	34.1 1.343	M22 7/8	UC217 UC217-52 UC217-53 UC217-55	CFL217	12.76 12.98 12.84 12.55
UCCFL218 218-56	90 3-1/2	320 12-19/32	265 10-7/16	40 1-37/64	24 15/16	25 63/64	211 8-5/16	122 4-51/64	96 3.7795	39.7 1.5630	M22 7/8	UC218 UC218-56	CFL218	15.16 15.27